



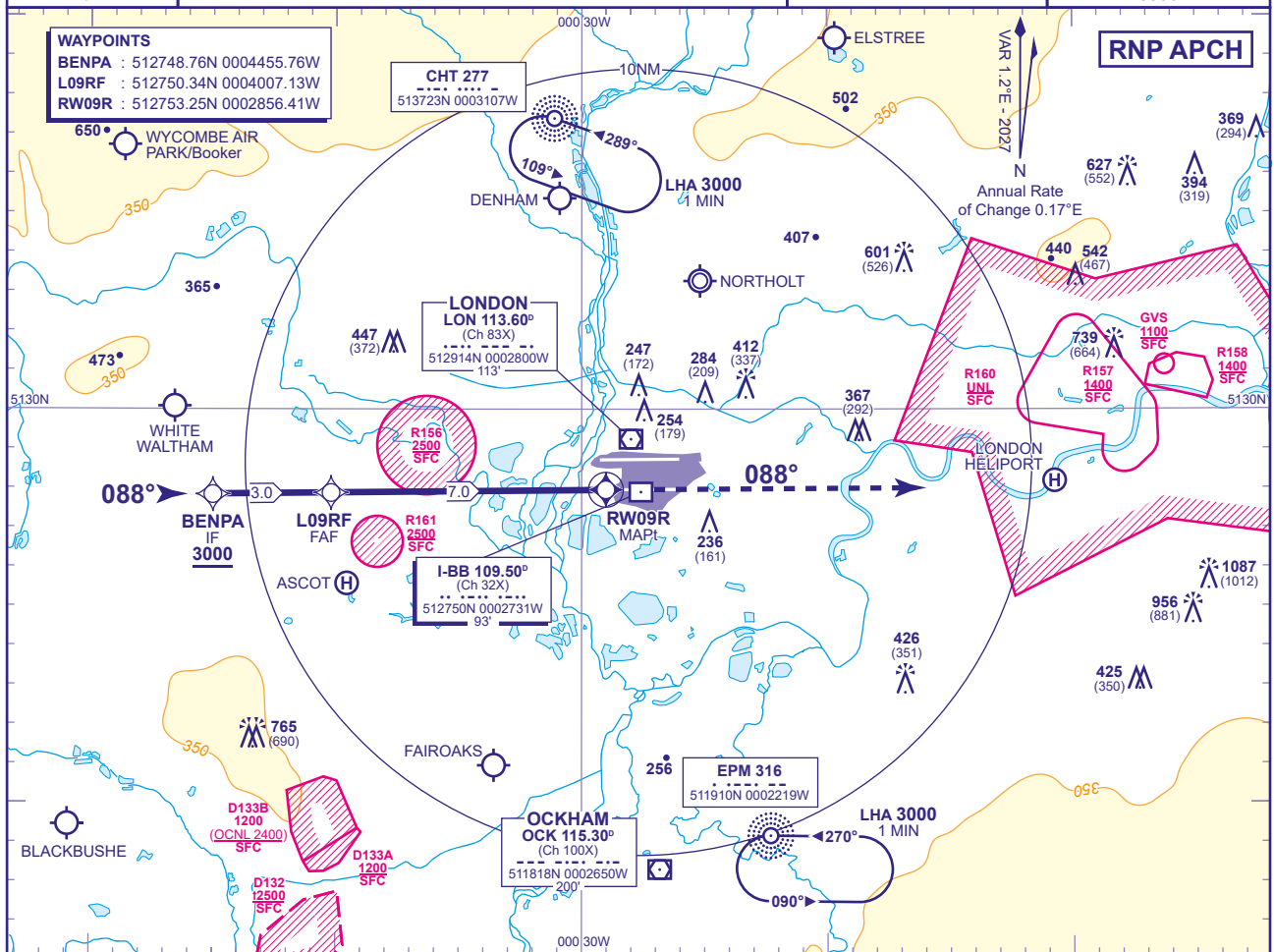
MSA 25NM ARP

APP 119.730, 120.400, 127.525, 134.980  
TWR 118.505, 118.705, 124.480  
RAD 125.625, 127.525  
ATIS 128.080, 113.750, 117.000

HEATHROW DIRECTOR  
HEATHROW TOWER  
HEATHROW RADAR  
HEATHROW INFORMATION

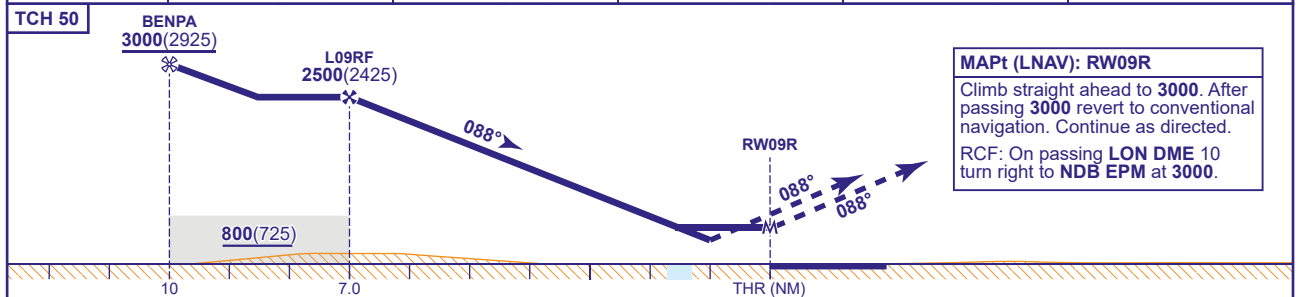
AD ELEVATION 83  
THR ELEVATION 75  
OBSTACLE ELEVATION  
1087 AMSL  
(1012) (ABOVE THR)  
BEARINGS ARE MAGNETIC

MIN TEMP -10°C  
TRANSITION ALTITUDE  
6000



RECOMMENDED PROFILE VERTICAL PATH ANGLE 3.2° (5.6%), 340FT/NM

NM to RW09R	6	5	4	3	2
ALT(HGT)	2160(2085)	1820(1745)	1480(1405)	1140(1065)	800(725)



## MAPt (LNAV): RW09R

Climb straight ahead to **3000**. After passing **3000** revert to conventional navigation. Continue as directed.

RCF: On passing **LON DME 10** turn right to **NDB EPM** at **3000**.

Aircraft Category	A	B	C	D	Rate of descent	G/S KT	160	140	120	100	80
OCA (OCH)	LNAV/VNAV	400(325)	410(335)	430(355)	540(465)	FT/MIN	910	790	680	570	450
	LNAV	620(545)	620(545)	620(545)	620(545)						
VM(C)OCA (OCH AAL)	Total Area	770(687)	770(687)	940(857)	940(857)						

**NOTES**

- Pilots should 'Request RNP Approach' on first contact with Heathrow Director.
- Aircraft will normally be radar vectored from the STAR Holding/Initial Approach Fixes.
- Missed Approach Procedure and RCF use conventional navigation aids and are not available without DME LON and NDB EPM.
- PAPI angle is 3.0°.

**CHANGE (1/26):** EGR161 ADDED.